

<b>NAME</b>		<b>ROLL NO.</b>	
-------------	--	-----------------	--



**INDIAN SCHOOL MUSCAT  
MIDDLE SECTION  
HALF YEARLY EXAMINATION 2019 – 20  
SUBJECT – SCIENCE**



CLASS 6  
15.09.2019

Code: MXSCO6  
Time Allotted: 2 ½ hrs  
Max .Marks: 80

General Instructions.

1. The question paper comprises of three sections **A, B & C**. You have to **attempt all** the sections.
2. All the questions are **compulsory**.
3. All the answers should be written in the **answer sheet** provided.

**SECTION ‘A’ – ( ‘1’ MARK EACH ) – TOTAL – 20 MARKS**

Marks

**Q.1. MULTIPLE CHOICE QUESTIONS: -**

- |     |   |   |
|-----|---|---|
| (a) | Out of the following which is an example of translucent object?<br>i) A thin gold sheet      ii) butter paper      iii) mirror      iv) wood  | 1 |
| (b) | When water is mixed with plaster of Paris and dries it becomes<br>i) Soft      ii) Very soft      iii) hard      iv) soluble  | 1 |
| (c) | Magnets can be<br>i) Cylindrical      ii) horse shoe      iii) U- shaped      iv) all of these.   | 1 |
| (d) | Which is an example of a magnetic substance?<br>i) Iron      ii) Nickel      iii) Cobalt      iv) all of these  | 1 |
| (e) | This type of plant has a thick, hard and woody stem?<br>i) Tree      ii) Shrub      iii) Herb      iv) all of these.  | 1 |
| (f) | The object can never form a circular shadow?<br>i) A ball      ii) A flat disc      iii) A rectangular shoe box      iv) An ice cream cone.   | 1 |
| (g) | Air and water are ---<br>i) Trans parent and non-luminous      iii) opaque and non-luminous<br>ii) Translucent and non-luminous      iv) Transparent and luminous   | 1 |
| (h) | Which of the following is not a part of water cycle?<br>i) Cloud formation      ii) Rain      iii) Drinking      iv) Sun  | 1 |
| (i) | Mountaineers carry oxygen cylinders with them because: -<br>i) There is no oxygen at high altitudes.<br>ii) There is a deficiency of oxygen on high altitudes<br>iii) Oxygen used for cooking.<br>iv) Oxygen keeps them warm at low temperatures. | 1 |
| (j) | The major component of air is<br>i) Nitrogen      ii) Oxygen      iii) Carbon dioxide      iv) water vapour   | 1 |

**Q.2. VERY SHORT ANSWER QUESTIONS: -**

- |     |  |   |
|-----|--|---|
| (a) | Which property of oxygen is helpful for aquatic plants and animals?                        | 1 |
| (b) | Some metals lose their shine when exposed to air for long time. Why?                       | 1 |
| (c) | When we dissolve salt in water we get salt solution. How can we reverse this change?       | 1 |
| (d) | Mention two ways in which magnets lose their magnetism.                                    | 1 |
| (e) | If a bar magnet is cut lengthwise into two parts, how many poles will form for each piece? | 1 |
| (f) | Write the characteristics of the image formed by a pinhole camera?                         | 1 |
| (g) | What are luminous objects?   | 1 |
| (h) | Why do earth worms come out of the soil during rainy season?                               | 1 |
| (i) | What happens when air comes in contact with a cold surface?                                | 1 |
| (j) | What are the two important products we get out of photosynthesis?                          | 1 |

<b>Q.NO</b>	<b><u>SECTION 'B' – ( '3' MARKS EACH ) – TOTAL – 30 MARKS</u></b>	<b>Marks</b>
(3)	a) State any two advantages of classifying materials into different group? b) Tom has a tray of eggs, a few of these eggs are rotten how can Tom separate the rotten eggs from good ones? c) Give one difference between hard and soft materials.	3
(4)	a) What are soluble substances? Give two examples. b) Give two examples of immiscible liquids.	3
(5)	How is a metal rim fixed on a wooden wheel of a cart? ( 3 points)	3
(6)	a) State any two properties of a magnet? b) Draw a neat diagram of magnetic compass.	3

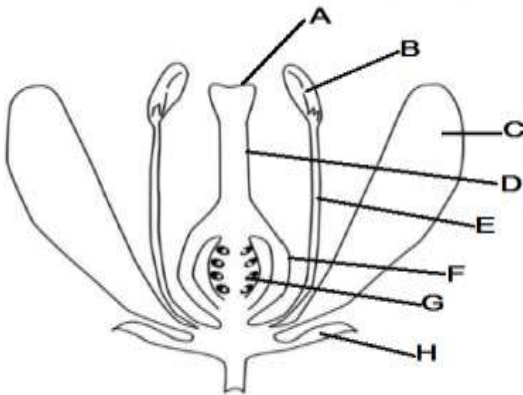
- (7) a) What is transpiration? 3  
 b) State any two functions of stem.
- [OR]**
- a) State any two functions of root.  
 b) Give one difference between creepers and climbers.
- (8) a) Give two differences between a shadow of a flower and its reflected image. 3  
 b) In a completely dark room, if you hold up a mirror in front of you, you will not be able see your reflection. Give one reason.
- (9) a) Is Butter paper an example of a translucent object? 3  
 b) Write the three conditions necessary for the formation of a shadow.  
 c) State the principle on which the pinhole camera works.
- (10) a) What is water cycle? 3  
 b) Suggest two ways of conserving water at home.
- (11) a) Give one difference between drought and floods. 3  
 b) Write any two consequences of flood.
- (12) Name the component of air 3  
 a) that is required by plants to make proteins  
 b) which is used in aerated drinks.  
 c) which is used by the plants for respiration.

- | Q.NO | <b><u>SECTION 'C' – ( '5' MARKS EACH ) – TOTAL – 30 MARKS</u></b>  | Marks |
|------|--|-------|
| (13) | a) Classify the following change that can be reversed / cannot be reversed<br>i) Growth of a plant<br>ii) Melting of a wax<br>iii) Breaking of a glass rod.<br>iv) Preparing curd from milk.<br>b) A small gap is left between the joints of a railway track. Give reasons<br>c) Rajesh says that deforestation is a change that can be reversed. Is he right in saying so?<br>Give reason to justify your answer. | 5     |

- (14) How will you store bar magnets? Explain with a neat labeled diagram. 5  
**( OR )**
- What is a magnetic compass?
  - How will you find the East using a magnetic compass?
  - Draw a neat diagram showing the storing of a horse shoe magnet.
  - State any two uses of magnets.

- (15) a) Draw a neat diagram of leaf and label the following parts. 5  
 i) Lamina ii) Petiole iii) veins iv) midrib
- b) State any two differences between taproot system and fibrous root system.

- (16) Observe the following diagram and answer the following questions. 5



- Label the parts marked **A, B, D, E, F** and **G**
  - Write one function of the part labelled as i) **C** ii) **H**
- (17) a) What is rain water harvesting? 5  
 b) State the two methods of rain water harvesting.  
 c) Apart from Transpiration, Write any two processes involved in the formation of clouds and define them.
- (18) a) How do plants and animals help in maintaining balance of oxygen and carbon dioxide? 5  
 Explain.  
 b) List four activities that are possible due to the presence of air.  
 c) Why does a lump of cotton wool shrink in water?

End of the question paper.